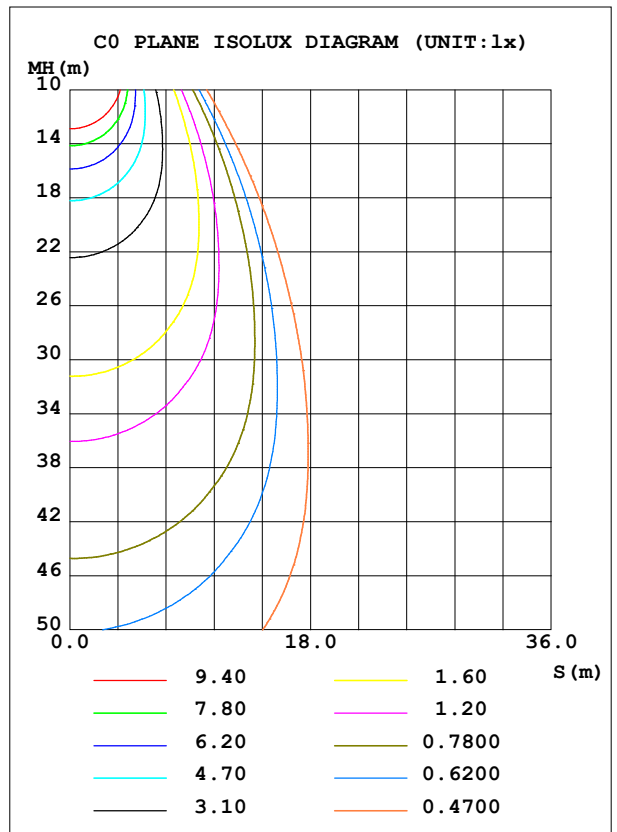
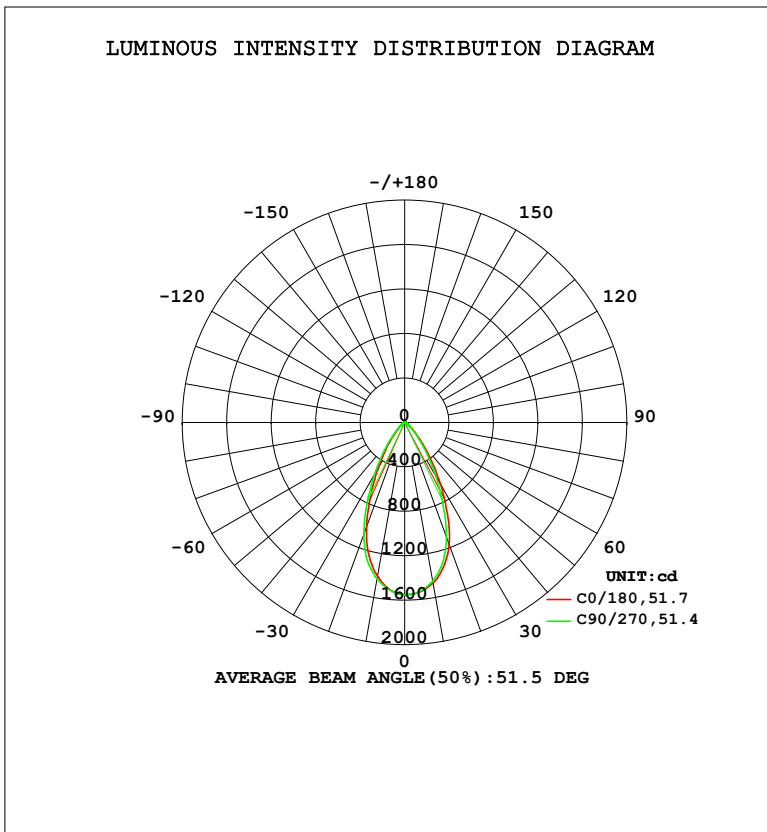


LUMINAIRE PHOTOMETRIC TEST REPORT

Test:U:24.00V I:0.5230A P:12.52W PF:1.0000 Freq:0Hz		
Lamp Flux:1269.13x1 lm		
NAME:	TYPE:	WEIGHT:
SPEC.:	DIM.:	SERIAL No.:
MFR.:	SUR.:	Shielding Angle:

DATA OF LAMP		PHOTOMETRIC DATA			
MODEL		Imax (cd)	1551	S/MH (C0/180)	0.76
NOMINAL POWER (W)		LOR (%)	100.0	S/MH (C90/270)	0.79
RATED VOLTAGE (V)		TOTAL FLUX (lm)	1269.1	$\eta$ UP, DN (C0-180)	0.0, 51.0
NOMINAL FLUX (lm)	1269.13	CIE CLASS	DIRECT	$\eta$ UP, DN (C180-360)	0.1, 48.8
LAMPS INSIDE	1	$\eta$ up (%)	0.1	CIBSE SHR NOM	0.75
TEST VOLTAGE (V)		$\eta$ down (%)	99.9	CIBSE SHR MAX	0.80



C Range: 0 - 360DEG  
 C Interval: 22.5DEG  
 Test Speed: HIGH  
 Temperature: 25.2 °C  
 Operators: Dano  
 Test Date: 2023-08-31

$\gamma$  Range: 0 - 180DEG  
 $\gamma$  Interval: 1.0DEG  
 Test System: EVERFINE GO-R5000\_V2 SYSTEM V2.00.459  
 Humidity: 55.3%  
 Test Distance: 2.900m [K=0.8810]  
 Remarks:

## ZONAL FLUX DIAGRAM

ZONAL FLUX DIAGRAM:

$\gamma$	C0	C45	C90	C135	C180	C225	C270	C315	$\gamma$	$\Phi$ zone	$\Phi$ total	%lum, lamp
10	1467	1465	1450	1425	1407	1416	1430	1454	0- 10	142.6	142.6	11.2,11.2
20	1172	1159	1100	1039	1003	1028	1074	1132	10- 20	359.6	502.2	39.6,39.6
30	650.4	625.2	566.1	514.7	483.1	496.0	549.8	607.8	20- 30	371.9	874.1	68.9,68.9
40	258.3	248.8	215.4	185.9	171.8	179.5	205.2	239.2	30- 40	225.9	1100	86.7,86.7
50	85.03	82.79	70.01	54.24	50.81	55.72	66.77	80.11	40- 50	98.15	1198	94.4,94.4
60	35.02	32.30	25.07	23.83	23.52	24.76	26.70	31.68	50- 60	37.96	1236	97.4,97.4
70	20.91	17.33	11.51	12.38	13.73	14.59	11.23	18.82	60- 70	20.62	1257	99,99
80	7.951	4.255	1.727	2.253	4.183	1.164	1.888	5.454	70- 80	9.811	1267	99.8,99.8
90	0.0073	0.0085	0.0085	0.0081	0.0161	0.0117	0.0196	0.0263	80- 90	0.9370	1268	99.9,99.9
100	0.0068	0.0055	0.0060	0.0074	0.0267	0.0221	0.0170	0.0175	90-100	0.0126	1268	99.9,99.9
110	0.0165	0.0191	0.0154	0.0197	0.0416	0.0382	0.0290	0.0321	100-110	0.0213	1268	99.9,99.9
120	0.0540	0.0502	0.0516	0.0643	0.0840	0.0795	0.0648	0.0644	110-120	0.0407	1268	99.9,99.9
130	0.1642	0.1632	0.1575	0.1954	0.2548	0.2349	0.1982	0.2034	120-130	0.1053	1268	99.9,99.9
140	0.3633	0.3377	0.3396	0.3980	0.6444	0.5948	0.4966	0.5391	130-140	0.2429	1268	99.9,99.9
150	0.5343	0.4721	0.4524	0.5537	1.060	1.008	0.8561	0.9241	140-150	0.3765	1268	99.9,99.9
160	0.7011	0.6642	0.6510	0.7474	1.323	1.322	1.176	1.207	150-160	0.3983	1269	100,100
170	0.8007	0.7258	0.7598	0.8354	1.256	1.233	1.162	1.200	160-170	0.2813	1269	100,100
180	1.025	0.9643	1.044	1.091	1.031	0.9758	1.001	1.077	170-180	0.0959	1269	100,100
DEG	LUMINOUS INTENSITY:cd									UNIT:lm		

Conical surface Flux(90deg): 1160.4 lm

%lum = 91.4%

%lamp = 91.4%

Conical surface Flux(120deg): 1236.2 lm

%lum = 97.4%

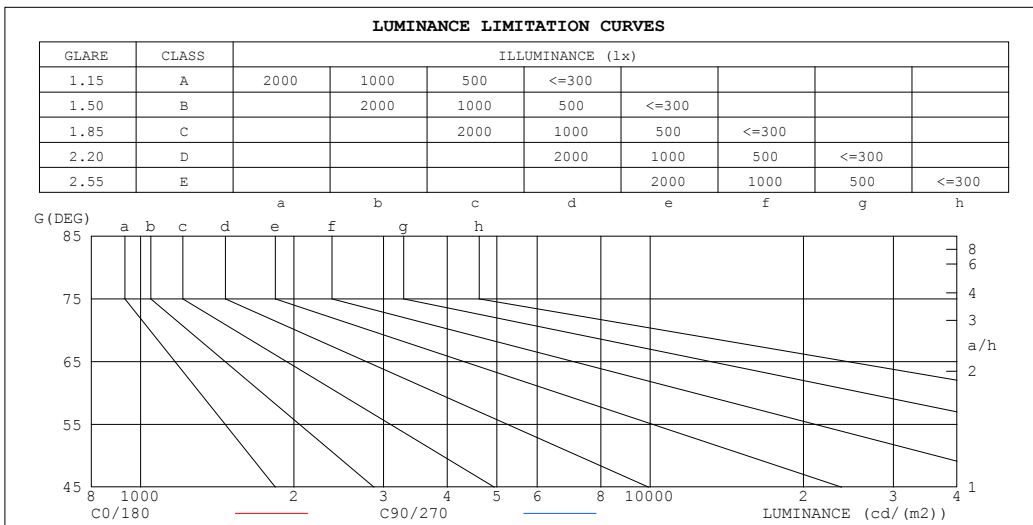
%lamp = 97.4%

C Range: 0 - 360DEG  
C Interval: 22.5DEG  
Test Speed: HIGH  
Temperature:25.2℃  
Operators:Dano  
Test Date:2023-08-31

$\gamma$  Range: 0 - 180DEG  
 $\gamma$  Interval: 1.0DEG  
Test System:EVERFINE GO-R5000\_V2 SYSTEM V2.00.459  
Humidity:55.3%  
Test Distance:2.900m [K=0.8810]  
Remarks:

LUMINANCE LIMITATION CURVES

Test:U:24.00V I:0.5230A P:12.52W PF:1.0000 Freq:0Hz Lamp Flux:1269.13x1 lm		
NAME:	TYPE:	WEIGHT:
SPEC.:	DIM.:	SERIAL No.:
MFR.:	SUR.:	Shielding Angle:



LUMINANCE cd/(m2)		
G (DEG)	C0/180	C90/270
85	7	15
80	154	33
75	197	87
70	205	112
65	214	138
60	235	167
55	296	230
50	444	363
45	701	588

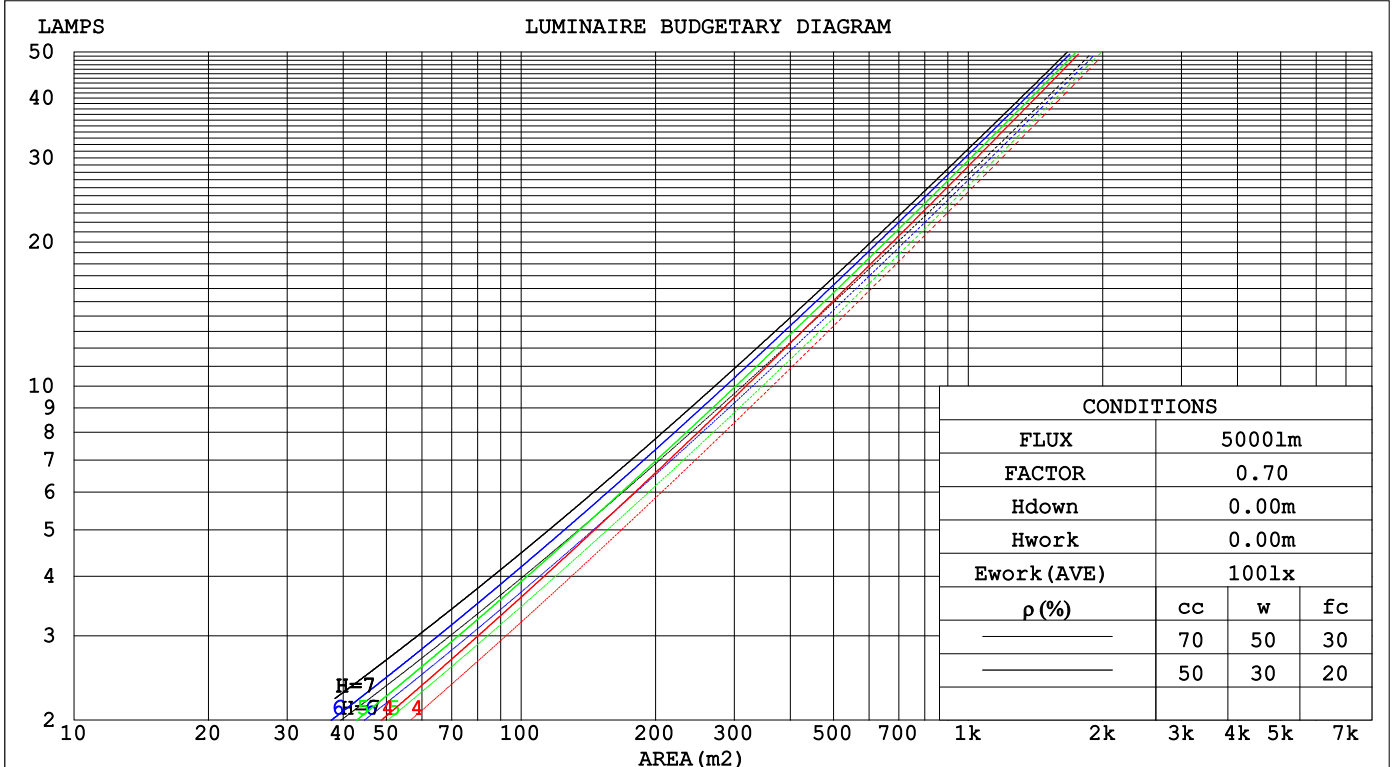
C Range: 0 - 360DEG  
 C Interval: 22.5DEG  
 Test Speed: HIGH  
 Temperature:25.2℃  
 Operators:Dano  
 Test Date:2023-08-31

γ Range: 0 - 180DEG  
 γ Interval: 1.0DEG  
 Test System:EVERFINE GO-R5000\_V2 SYSTEM V2.00.459  
 Humidity:55.3%  
 Test Distance:2.900m [K=0.8810]  
 Remarks:

**CU AND LUMINAIRE BUDGETARY ESTIMATE DIAGRAM**

Test:U:24.00V I:0.5230A P:12.52W PF:1.0000 Freq:0Hz		
Lamp Flux:1269.13x1 lm		
NAME:	TYPE:	WEIGHT:
SPEC.:	DIM.:	SERIAL No.:
MFR.:	SUR.:	Shielding Angle:

pcc	30%			70%			50%			30%			10%			0
pw	50%	30%	10%	50%	30%	10%	50%	30%	10%	50%	30%	10%	50%	30%	10%	0
pfc	20%			20%			20%			20%			20%			0
RCR	RCR:Room Cavity Ratio															
	Coefficients of Utilization(CU)															
0.0	1.06	1.06	1.06	1.16	1.16	1.16	1.11	1.11	1.11	1.06	1.06	1.06	1.02	1.02	1.02	.00
1.0	1.00	.99	.97	1.08	1.06	1.04	1.04	1.02	1.00	1.00	.99	.97	.97	.96	.95	.93
2.0	.94	.91	.89	1.00	.96	.93	.97	.94	.91	.94	.91	.89	.91	.89	.87	.86
3.0	.88	.85	.82	.93	.89	.85	.91	.87	.83	.88	.85	.82	.86	.83	.81	.79
4.0	.83	.79	.76	.87	.82	.78	.85	.80	.77	.83	.79	.76	.81	.78	.75	.73
5.0	.78	.74	.70	.82	.76	.72	.80	.75	.71	.78	.74	.70	.77	.73	.70	.68
6.0	.74	.69	.66	.77	.71	.67	.75	.70	.66	.74	.69	.66	.72	.68	.65	.64
7.0	.70	.65	.61	.72	.66	.62	.71	.66	.62	.70	.65	.61	.68	.64	.61	.60
8.0	.66	.61	.58	.68	.62	.58	.67	.62	.58	.66	.61	.58	.65	.61	.57	.56
9.0	.62	.58	.54	.64	.59	.55	.63	.58	.54	.62	.58	.54	.62	.57	.54	.53
10.0	.59	.55	.51	.61	.55	.51	.60	.55	.51	.59	.55	.51	.59	.54	.51	.50



C Range: 0 - 360DEG  
 C Interval: 22.5DEG  
 Test Speed: HIGH  
 Temperature:25.2°C  
 Operators:Dano  
 Test Date:2023-08-31

γ Range: 0 - 180DEG  
 γ Interval: 1.0DEG  
 Test System:EVERFINE GO-R5000\_V2 SYSTEM V2.00.459  
 Humidity:55.3%  
 Test Distance:2.900m [K=0.8810]  
 Remarks:

WEC AND CCEC

Test:U:24.00V I:0.5230A P:12.52W PF:1.0000 Freq:0Hz		
Lamp Flux:1269.13x1 lm		
NAME:	TYPE:	WEIGHT:
SPEC.:	DIM.:	SERIAL No.:
MFR.:	SUR.:	Shielding Angle:

ρ <sub>cc</sub>	30%			70%			50%			30%			10%			0
ρ <sub>w</sub>	50%	30%	10%	50%	30%	10%	50%	30%	10%	50%	30%	10%	50%	30%	10%	0
ρ <sub>fc</sub>	20%			20%			20%			20%			20%			0
RCR	RCR:Room Cavity Ratio						Wall Exitance Coefficients(WEC)									
0.0																
1.0	.156	.090	.029	.181	.103	.033	.168	.096	.031	.156	.090	.029	.146	.084	.027	
2.0	.153	.086	.027	.174	.096	.030	.163	.091	.028	.153	.086	.027	.144	.082	.026	
3.0	.148	.081	.025	.166	.089	.027	.157	.085	.026	.148	.081	.025	.140	.078	.024	
4.0	.142	.076	.023	.158	.082	.024	.150	.079	.024	.142	.076	.023	.135	.074	.022	
5.0	.136	.072	.021	.150	.077	.022	.143	.074	.022	.136	.072	.021	.130	.070	.021	
6.0	.131	.068	.020	.143	.072	.021	.137	.070	.020	.131	.068	.020	.126	.066	.020	
7.0	.126	.064	.019	.136	.068	.019	.131	.066	.019	.126	.064	.019	.121	.063	.018	
8.0	.121	.061	.018	.130	.064	.018	.125	.063	.018	.121	.061	.018	.116	.060	.017	
9.0	.116	.058	.017	.124	.061	.017	.120	.059	.017	.116	.058	.017	.112	.057	.016	
10.0	.111	.055	.016	.119	.058	.016	.115	.056	.016	.111	.055	.016	.108	.054	.016	

ρ <sub>cc</sub>	30%			70%			50%			30%			10%			0
ρ <sub>w</sub>	50%	30%	10%	50%	30%	10%	50%	30%	10%	50%	30%	10%	50%	30%	10%	0
ρ <sub>fc</sub>	20%			20%			20%			20%			20%			0
RCR	RCR:Room Cavity Ratio						Ceiling Cavity Exitance Coefficients(CCEC)									
0.0																
1.0	.064	.064	.064	.164	.164	.164	.112	.112	.112	.064	.064	.064	.021	.021	.021	
2.0	.058	.054	.050	.148	.136	.125	.101	.093	.086	.058	.054	.050	.019	.017	.016	
3.0	.054	.046	.040	.136	.115	.097	.093	.079	.068	.054	.046	.040	.017	.015	.013	
4.0	.050	.040	.032	.125	.099	.077	.086	.069	.054	.050	.040	.032	.016	.013	.010	
5.0	.047	.035	.026	.117	.086	.063	.080	.060	.044	.047	.035	.026	.015	.011	.009	
6.0	.044	.031	.022	.110	.077	.052	.076	.053	.037	.044	.031	.022	.014	.010	.007	
7.0	.041	.028	.018	.103	.069	.043	.071	.048	.031	.041	.028	.018	.013	.009	.006	
8.0	.039	.026	.016	.098	.062	.037	.068	.044	.026	.039	.026	.016	.013	.008	.005	
9.0	.037	.024	.013	.093	.057	.032	.064	.040	.023	.037	.024	.013	.012	.008	.004	
10.0	.036	.022	.012	.089	.052	.028	.061	.037	.020	.036	.022	.012	.012	.007	.004	
10.0	.034	.020	.010	.085	.049	.024	.059	.034	.017	.034	.020	.010	.011	.007	.003	

C Range: 0 - 360DEG  
 C Interval: 22.5DEG  
 Test Speed: HIGH  
 Temperature:25.2℃  
 Operators:Dano  
 Test Date:2023-08-31

γ Range: 0 - 180DEG  
 γ Interval: 1.0DEG  
 Test System:EVERFINE GO-R5000\_V2 SYSTEM V2.00.459  
 Humidity:55.3%  
 Test Distance:2.900m [K=0.8810]  
 Remarks:

UGR(Unified Glare Rating) Table

Test:U:24.00V I:0.5230A P:12.52W PF:1.0000 Freq:0Hz										
Lamp Flux:1269.13x1 lm										
NAME:			TYPE:			WEIGHT:				
SPEC.:			DIM.:			SERIAL No.:				
MFR.:			SUR.:			Shielding Angle:				
ceiling/cavity	0.7	0.7	0.5	0.5	0.3	0.7	0.7	0.5	0.5	0.3
walls	0.5	0.3	0.5	0.3	0.3	0.5	0.3	0.5	0.3	0.3
working plane	0.2	0.2	0.2	0.2	0.2	0.2	0.2	0.2	0.2	0.2
Room dimensions	Viewed crosswise					Viewed endwise				
x = 2H y = 2H	7.3	8.3	7.5	8.4	8.6	6.5	7.5	6.7	7.7	7.8
3H	7.5	8.4	7.8	8.6	8.8	6.5	7.5	6.8	7.7	7.9
4H	7.7	8.5	7.9	8.7	9.0	6.5	7.4	6.8	7.6	7.9
6H	7.8	8.6	8.1	8.8	9.1	6.5	7.3	6.8	7.5	7.8
8H	7.7	8.5	8.1	8.8	9.0	6.4	7.2	6.7	7.5	7.7
12H	7.7	8.4	8.0	8.7	9.0	6.4	7.1	6.7	7.4	7.7
4H 2H	7.2	8.1	7.5	8.3	8.5	6.5	7.3	6.8	7.6	7.8
3H	7.6	8.3	7.9	8.6	8.9	6.6	7.3	6.9	7.6	7.9
4H	7.8	8.5	8.1	8.8	9.1	6.7	7.3	7.0	7.6	7.9
6H	8.0	8.6	8.4	8.9	9.3	6.6	7.2	7.0	7.5	7.9
8H	8.0	8.5	8.4	8.9	9.2	6.5	7.1	6.9	7.5	7.8
12H	7.9	8.4	8.3	8.8	9.2	6.5	7.0	6.9	7.4	7.8
8H 4H	7.7	8.3	8.1	8.7	9.0	6.6	7.2	7.0	7.5	7.9
6H	8.0	8.4	8.4	8.8	9.2	6.6	7.0	7.0	7.4	7.9
8H	8.0	8.4	8.4	8.8	9.2	6.5	6.9	7.0	7.4	7.8
12H	7.9	8.3	8.4	8.7	9.2	6.5	6.8	7.0	7.3	7.8
12H 4H	7.7	8.2	8.1	8.6	9.0	6.6	7.1	7.0	7.5	7.9
6H	7.9	8.3	8.4	8.7	9.2	6.6	7.0	7.0	7.4	7.8
8H	7.9	8.3	8.4	8.7	9.2	6.5	6.9	7.0	7.3	7.8
Variations with the observer position at spacings(CIE Pub.117):										
S = 1.0H	+ 1.7 / - 2.4					+ 1.8 / - 3.5				
1.5H	+ 2.9 / - 2.3					+ 2.8 / - 2.8				
2.0H	+ 2.9 / - 1.6					+ 3.3 / - 2.6				

CIE Pub.117, 1269 lm Total Lamp Luminous Flux Corrected (8log(F/F0) = 0.8)  
 Area: 0.3 m2

C Range: 0 - 360DEG  
 C Interval: 22.5DEG  
 Test Speed: HIGH  
 Temperature:25.2℃  
 Operators:Dano  
 Test Date:2023-08-31

γ Range: 0 - 180DEG  
 γ Interval: 1.0DEG  
 Test System:EVERFINE GO-R5000\_V2 SYSTEM V2.00.459  
 Humidity:55.3%  
 Test Distance:2.900m [K=0.8810]  
 Remarks:

**UTILIZATION FACTORS TABLE**

Test:U:24.00V I:0.5230A P:12.52W PF:1.0000 Freq:0Hz Lamp Flux:1269.13x1 lm		
NAME:	TYPE:	WEIGHT:
SPEC.:	DIM.:	SERIAL No.:
MFR.:	SUR.:	Shielding Angle:

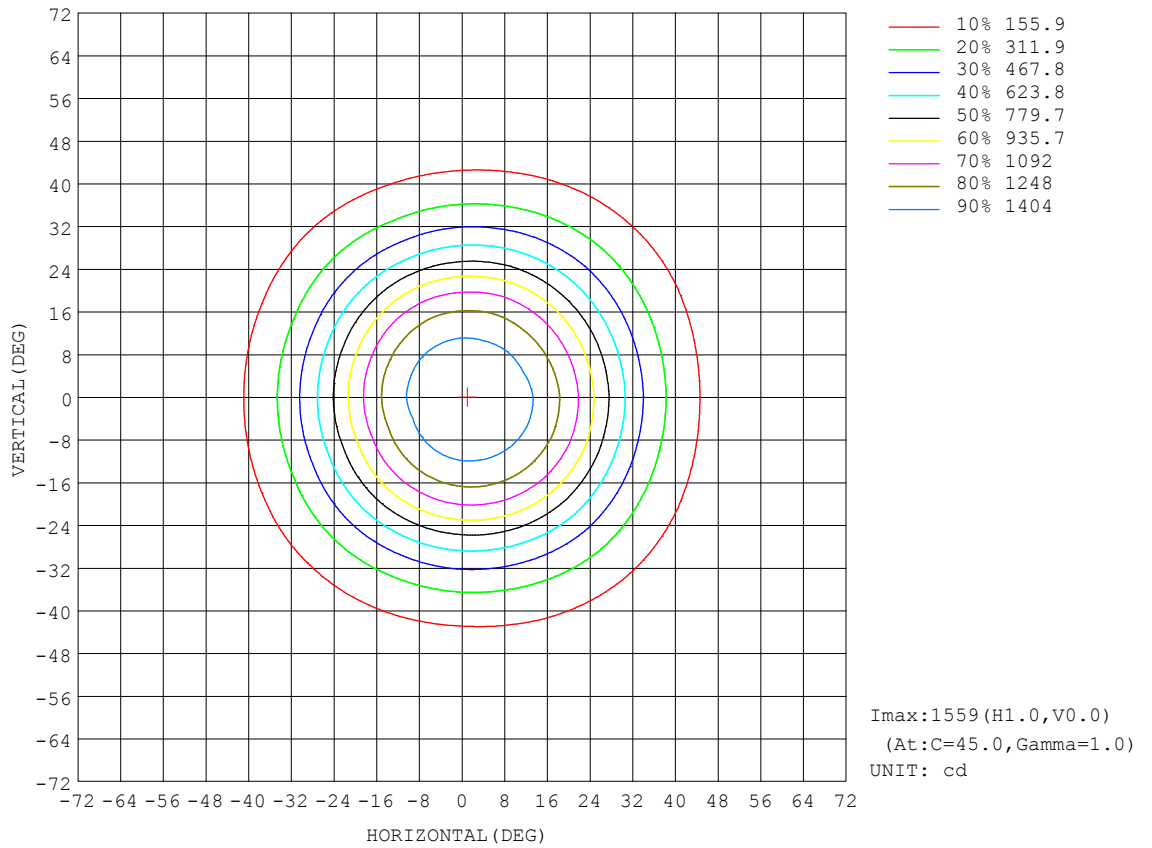
REFLECTANCE										
Ceiling	0.8	0.8	0.8	0.7	0.7	0.7	0.5	0.5	0.5	0
Walls	0.7	0.5	0.3	0.7	0.5	0.3	0.7	0.5	0.3	0
Working plane	0.2	0.2	0.2	0.2	0.2	0.2	0.2	0.2	0.2	0
ROOM INDEX	UTILIZATION FACTORS (PERCENT) $k(RI) \times RCR = 5$									
k = 0.60	83	76	72	83	76	72	82	76	72	68
0.80	91	85	80	90	84	80	89	84	80	76
1.00	96	90	86	95	90	86	94	90	85	81
1.25	101	95	91	100	94	91	98	93	90	85
1.50	104	98	95	103	98	94	100	96	93	88
2.00	107	102	99	106	101	98	103	99	97	91
2.50	109	105	101	107	103	100	104	101	99	92
3.00	111	107	104	109	105	103	105	103	101	94
4.00	113	110	107	111	108	106	107	105	103	96
5.00	114	112	110	112	110	108	108	106	105	97
ROOM INDEX	UF(total)									Direct
According to DIN EN 13032-2 2004			Suspended				SHRNOM = 1.25			

C Range: 0 - 360DEG  
 C Interval: 22.5DEG  
 Test Speed: HIGH  
 Temperature:25.2°C  
 Operators:Dano  
 Test Date:2023-08-31

$\gamma$  Range: 0 - 180DEG  
 $\gamma$  Interval: 1.0DEG  
 Test System:EVERFINE GO-R5000\_V2 SYSTEM V2.00.459  
 Humidity:55.3%  
 Test Distance:2.900m [K=0.8810]  
 Remarks:

ISOCANDELA DIAGRAM

Test:U:24.00V I:0.5230A P:12.52W PF:1.0000 Freq:0Hz		
Lamp Flux:1269.13x1 lm		
NAME:	TYPE:	WEIGHT:
SPEC.:	DIM.:	SERIAL No.:
MFR.:	SUR.:	Shielding Angle:

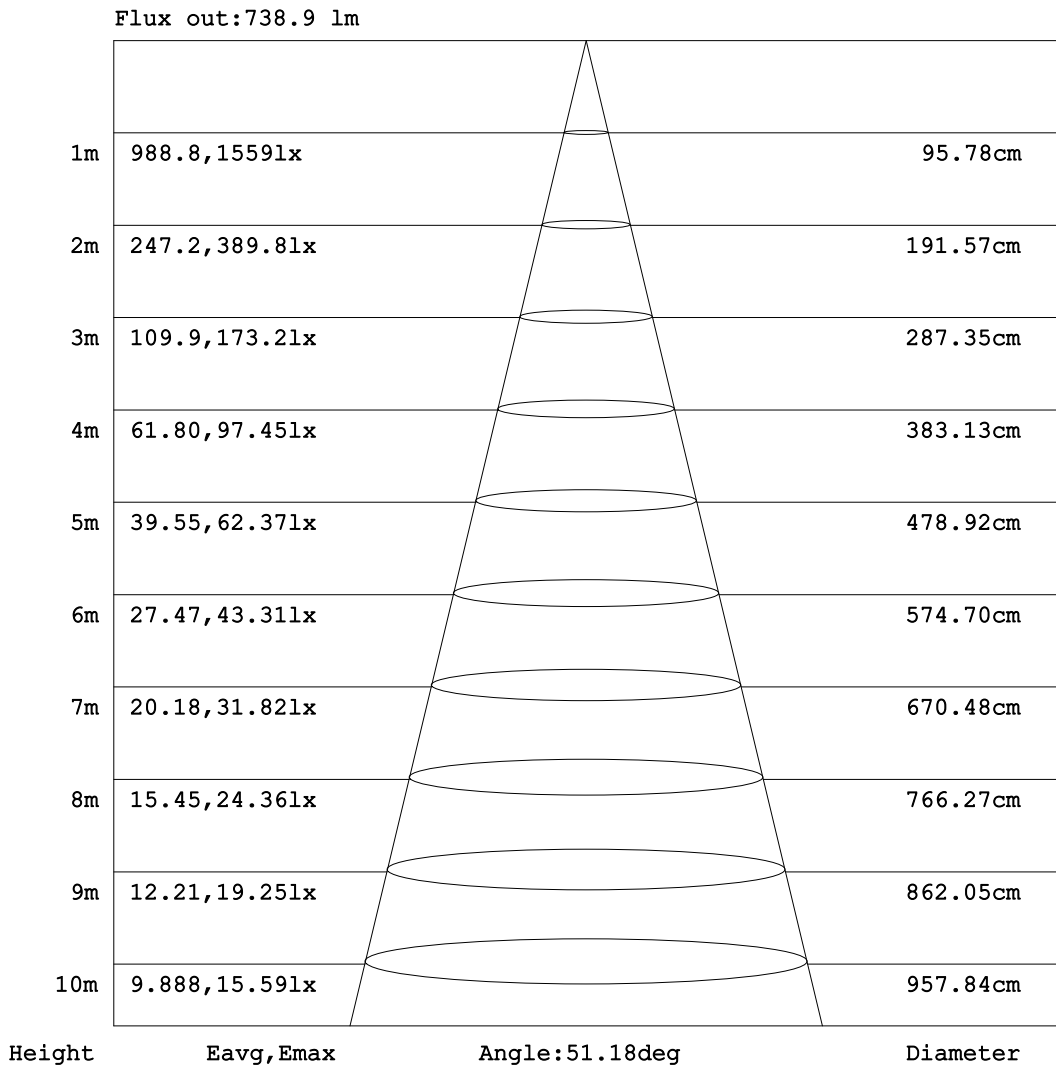


C Range: 0 - 360DEG  
 C Interval: 22.5DEG  
 Test Speed: HIGH  
 Temperature:25.2℃  
 Operators:Dano  
 Test Date:2023-08-31

γ Range: 0 - 180DEG  
 γ Interval: 1.0DEG  
 Test System:EVERFINE GO-R5000\_V2 SYSTEM V2.00.459  
 Humidity:55.3%  
 Test Distance:2.900m [K=0.8810]  
 Remarks:

**AAI Figure**

Test:U:24.00V I:0.5230A P:12.52W PF:1.0000 Freq:0Hz		
Lamp Flux:1269.13x1 lm		
NAME:	TYPE:	WEIGHT:
SPEC.:	DIM.:	SERIAL No.:
MFR.:	SUR.:	Shielding Angle:



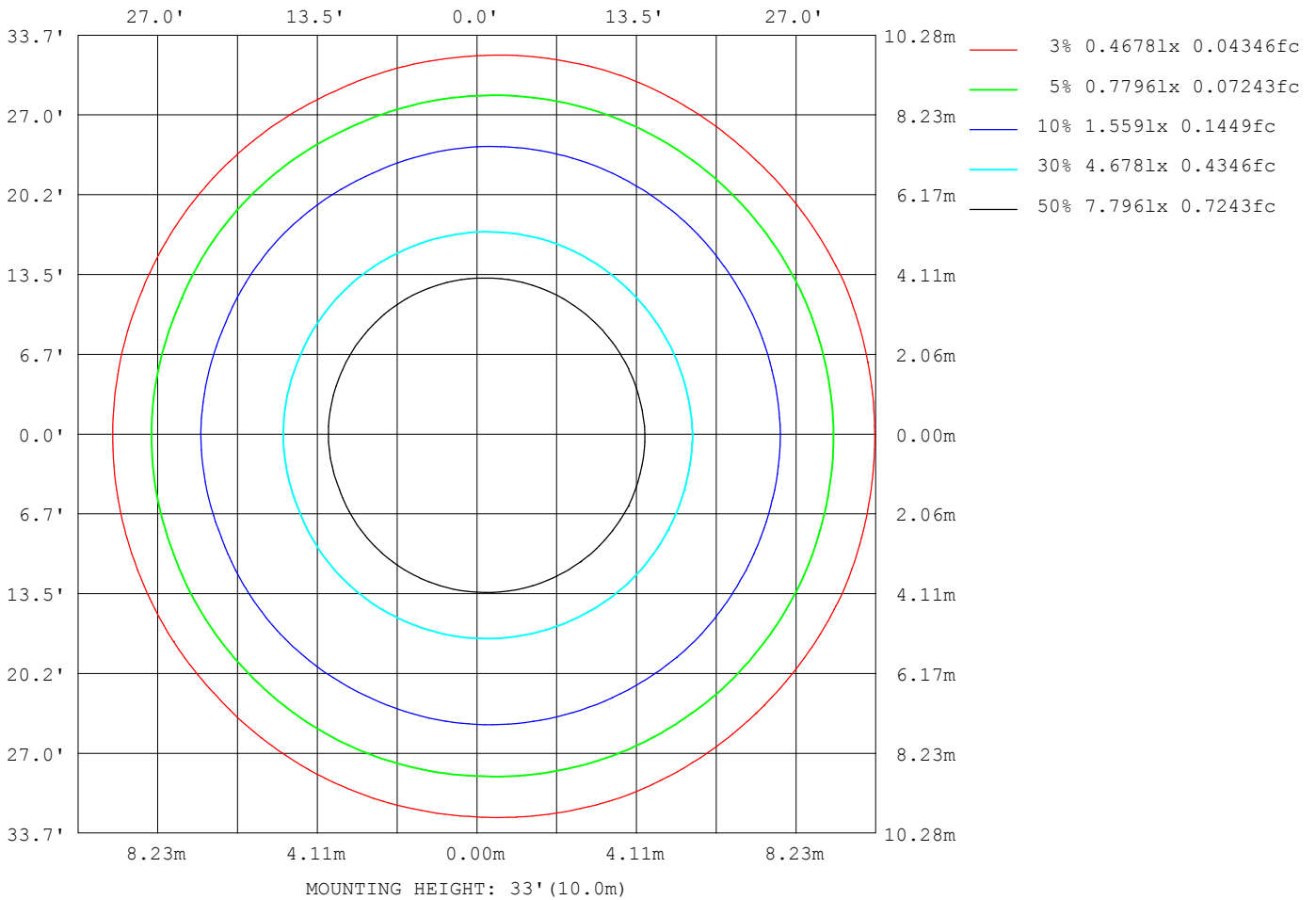
Note:The Curves indicate the illuminated area and the average illumination when the luminaire is at different distance.

C Range: 0 - 360DEG  
 C Interval: 22.5DEG  
 Test Speed: HIGH  
 Temperature:25.2°C  
 Operators:Dano  
 Test Date:2023-08-31

γ Range: 0 - 180DEG  
 γ Interval: 1.0DEG  
 Test System:EVERFINE GO-R5000\_V2 SYSTEM V2.00.459  
 Humidity:55.3%  
 Test Distance:2.900m [K=0.8810]  
 Remarks:

ISOLUX DIAGRAM

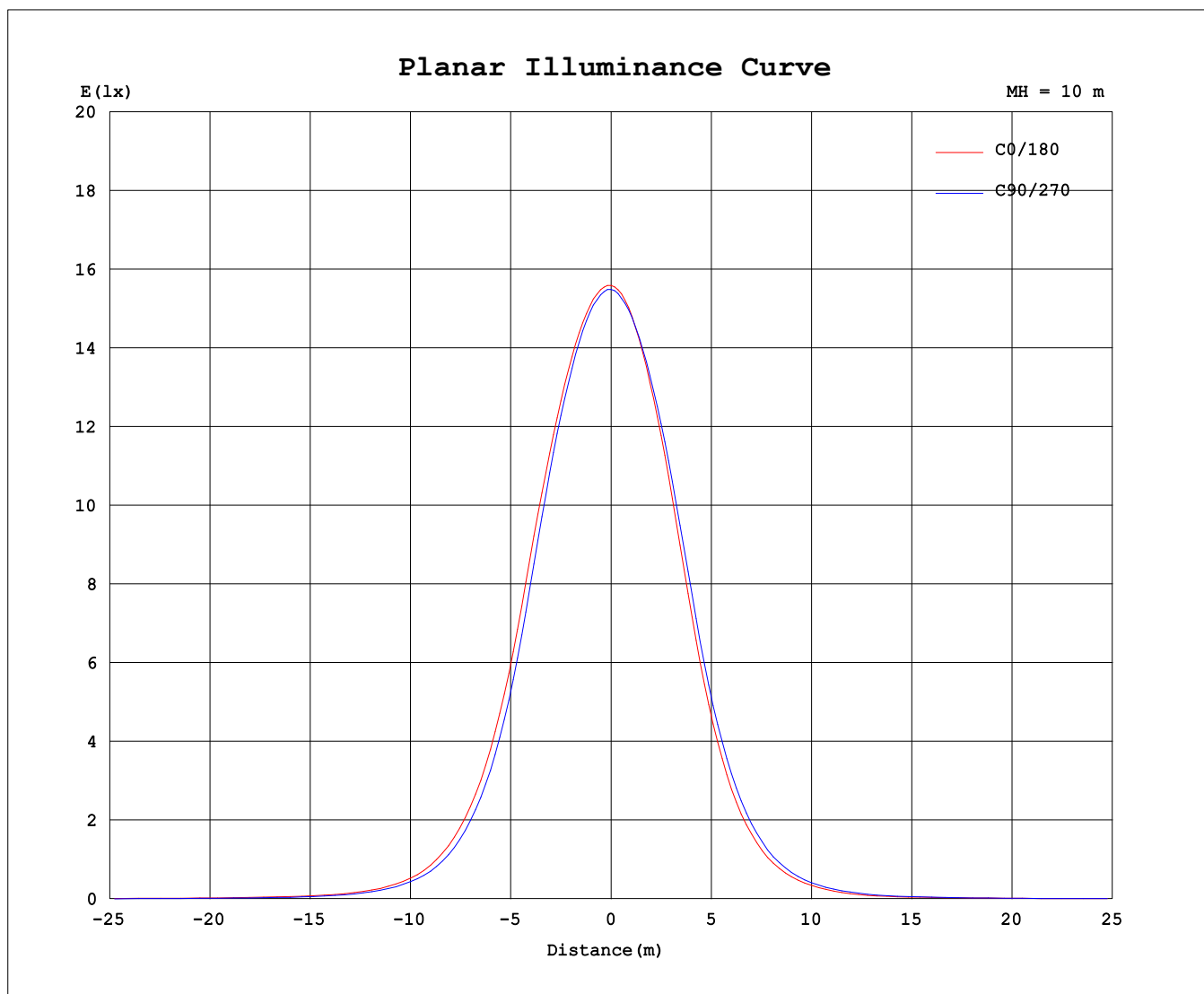
Test:U:24.00V I:0.5230A P:12.52W PF:1.0000 Freq:0Hz Lamp Flux:1269.13x1 lm		
NAME:	TYPE:	WEIGHT:
SPEC.:	DIM.:	SERIAL No.:
MFR.:	SUR.:	Shielding Angle:



C Range: 0 - 360DEG  
 C Interval: 22.5DEG  
 Test Speed: HIGH  
 Temperature:25.2°C  
 Operators:Dano  
 Test Date:2023-08-31

γ Range: 0 - 180DEG  
 γ Interval: 1.0DEG  
 Test System:EVERFINE GO-R5000\_V2 SYSTEM V2.00.459  
 Humidity:55.3%  
 Test Distance:2.900m [K=0.8810]  
 Remarks:

### Planar Illuminance Curve



C Range: 0 - 360DEG  
C Interval: 22.5DEG  
Test Speed: HIGH  
Temperature: 25.2°C  
Operators: Dano  
Test Date: 2023-08-31

γ Range: 0 - 180DEG  
γ Interval: 1.0DEG  
Test System: EVERFINE GO-R5000\_V2 SYSTEM V2.00.459  
Humidity: 55.3%  
Test Distance: 2.900m [K=0.8810]  
Remarks:

LUMINOUS DISTRIBUTION INTENSITY DATA

Test:U:24.00V I:0.5230A P:12.52W PF:1.0000 Freq:0Hz		
Lamp Flux:1269.13x1 lm		
NAME:	TYPE:	WEIGHT:
SPEC.:	DIM.:	SERIAL No.:
MFR.:	SUR.:	Shielding Angle:

Table--1

UNIT: cd

C (DEG) γ (DEG)	0	22.5	45	67.5	90	112.5	135	157.5	180	202.5	225	247.5	270	292.5	315	337.5			
0	1550	1550	1550	1550	1550	1550	1550	1550	1550	1550	1550	1550	1550	1550	1550	1550			
5	1533	1534	1534	1529	1528	1522	1519	1513	1511	1509	1511	1513	1515	1519	1526	1530			
10	1467	1470	1465	1458	1450	1440	1425	1412	1407	1408	1416	1422	1430	1439	1454	1462			
15	1349	1354	1344	1328	1314	1290	1272	1251	1244	1248	1260	1278	1290	1308	1324	1339			
20	1172	1174	1159	1131	1100	1068	1039	1012	1003	1008	1028	1053	1074	1108	1132	1159			
25	916	916	892	859	823	790	763	735	728	727	745	770	803	839	869	901			
30	650	640	625	593	566	536	515	490	483	479	496	514	550	581	608	631			
35	426	418	408	384	364	337	321	301	299	294	309	319	348	373	396	413			
40	258	254	249	234	215	201	186	176	172	170	179	188	205	223	239	250			
45	148	149	143	137	125	116	105	99.6	96.9	98.6	102	107	117	130	138	148			
50	85.0	87.9	82.8	80.0	70.0	63.6	54.2	50.8	50.8	51.6	55.7	61.8	66.8	75.9	80.1	88.2			
55	50.6	51.2	47.1	44.6	39.5	35.2	32.4	30.4	30.5	30.1	32.3	33.7	36.3	41.9	47.0	51.3			
60	35.0	33.9	32.3	28.3	25.1	24.5	23.8	22.8	23.5	22.8	24.8	25.1	26.7	28.9	31.7	33.9			
65	27.0	25.6	24.7	19.9	17.5	16.9	18.3	17.4	18.1	17.4	19.2	18.3	18.8	21.7	24.6	26.1			
70	20.9	19.6	17.3	13.0	11.5	10.3	12.4	13.1	13.7	13.2	14.6	11.3	11.2	13.9	18.8	20.2			
75	15.2	14.2	9.63	8.72	6.76	7.26	6.83	9.37	9.64	9.22	6.35	6.88	6.78	8.13	10.8	14.8			
80	7.95	6.87	4.25	2.70	1.73	2.26	2.25	3.45	4.18	3.68	1.16	2.22	1.89	2.95	5.45	8.86			
85	0.18	0.23	0.30	0.40	0.39	0.36	0.25	0.14	0.14	0.18	0.22	0.42	0.40	0.44	0.30	0.68			
90	0.01	0.01	0.01	0.01	0.01	0.01	0.01	0.01	0.02	0.01	0.01	0.01	0.02	0.04	0.03	0.01			
95	0.01	0.01	0.00	0.01	0.01	0.00	0.01	0.01	0.02	0.02	0.02	0.01	0.01	0.01	0.01	0.01			
100	0.01	0.02	0.01	0.01	0.01	0.01	0.01	0.01	0.03	0.03	0.02	0.02	0.02	0.02	0.02	0.02			
105	0.01	0.01	0.02	0.01	0.01	0.01	0.02	0.02	0.03	0.04	0.03	0.03	0.02	0.02	0.02	0.02			
110	0.02	0.02	0.02	0.02	0.02	0.02	0.02	0.03	0.04	0.04	0.04	0.03	0.03	0.03	0.03	0.03			
115	0.03	0.03	0.03	0.03	0.03	0.03	0.03	0.05	0.06	0.06	0.05	0.04	0.04	0.04	0.04	0.04			
120	0.05	0.06	0.05	0.05	0.05	0.05	0.06	0.07	0.08	0.09	0.08	0.07	0.06	0.06	0.06	0.06			
125	0.10	0.10	0.09	0.09	0.09	0.10	0.12	0.13	0.14	0.14	0.13	0.12	0.11	0.11	0.11	0.11			
130	0.16	0.16	0.16	0.16	0.16	0.17	0.20	0.21	0.25	0.25	0.23	0.21	0.20	0.19	0.20	0.20			
135	0.25	0.25	0.24	0.23	0.24	0.26	0.28	0.30	0.43	0.42	0.39	0.35	0.33	0.32	0.35	0.35			
140	0.36	0.36	0.34	0.31	0.34	0.36	0.40	0.41	0.64	0.63	0.59	0.53	0.50	0.49	0.54	0.56			
145	0.46	0.46	0.42	0.38	0.39	0.45	0.48	0.51	0.88	0.86	0.82	0.73	0.68	0.69	0.75	0.78			
150	0.53	0.52	0.47	0.44	0.45	0.53	0.55	0.59	1.06	1.07	1.01	0.94	0.86	0.87	0.92	0.98			
155	0.64	0.62	0.57	0.56	0.55	0.64	0.66	0.69	1.24	1.23	1.19	1.15	1.03	1.00	1.08	1.15			
160	0.70	0.69	0.66	0.62	0.65	0.70	0.75	0.75	1.32	1.32	1.32	1.24	1.18	1.15	1.21	1.26			
165	0.76	0.74	0.71	0.67	0.70	0.77	0.80	0.79	1.32	1.32	1.30	1.24	1.20	1.18	1.21	1.27			
170	0.80	0.76	0.73	0.73	0.76	0.82	0.84	0.83	1.26	1.26	1.23	1.18	1.16	1.16	1.20	1.23			
175	0.87	0.87	0.83	0.85	0.89	0.93	0.95	0.94	1.13	1.14	1.15	1.12	1.13	1.15	1.18	1.19			
180	1.02	0.98	0.96	1.01	1.04	1.08	1.09	1.07	1.03	1.03	0.98	0.97	1.00	1.04	1.08	1.08			

C Range: 0 - 360DEG  
 C Interval: 22.5DEG  
 Test Speed: HIGH  
 Temperature:25.2℃  
 Operators:Dano  
 Test Date:2023-08-31

γ Range: 0 - 180DEG  
 γ Interval: 1.0DEG  
 Test System:EVERFINE GO-R5000\_V2 SYSTEM V2.00.459  
 Humidity:55.3%  
 Test Distance:2.900m [K=0.8810]  
 Remarks: