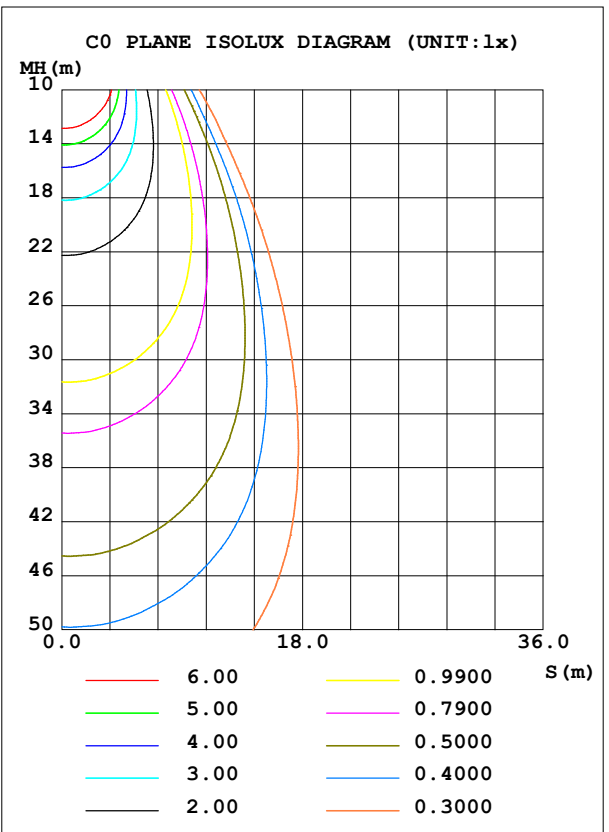
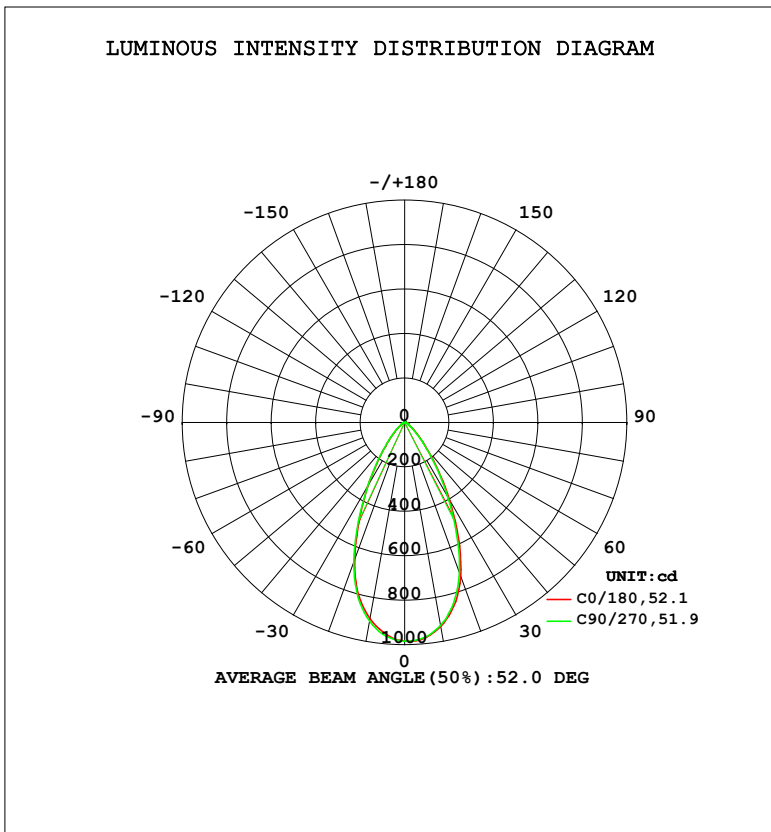


LUMINAIRE PHOTOMETRIC TEST REPORT

Test:U:24.00V I:0.3730A P:8.952W PF:1.0000 Freq:0Hz		
Lamp Flux:824.325x1 lm		
NAME:	TYPE:	WEIGHT:
SPEC.:	DIM.:	SERIAL No.:
MFR.:	SUR.:	Shielding Angle:

DATA OF LAMP		PHOTOMETRIC DATA			
MODEL		Imax (cd)	987.1	S/MH (C0/180)	0.78
NOMINAL POWER (W)		LOR (%)	100.0	S/MH (C90/270)	0.78
RATED VOLTAGE (V)		TOTAL FLUX (lm)	824.32	$\eta$ UP, DN (C0-180)	0.0, 53.1
NOMINAL FLUX (lm)	824.325	CIE CLASS	DIRECT	$\eta$ UP, DN (C180-360)	0.1, 46.8
LAMPS INSIDE	1	$\eta$ up (%)	0.1	CIBSE SHR NOM	0.75
TEST VOLTAGE (V)		$\eta$ down (%)	99.9	CIBSE SHR MAX	0.85



C Range: 0 - 360DEG  
 C Interval: 22.5DEG  
 Test Speed: HIGH  
 Temperature: 25.2°C  
 Operators: Dano  
 Test Date: 2023-08-31

$\gamma$  Range: 0 - 180DEG  
 $\gamma$  Interval: 1.0DEG  
 Test System: EVERFINE GO-R5000\_V2 SYSTEM V2.00.459  
 Humidity: 55.3%  
 Test Distance: 2.900m [K=0.8810]  
 Remarks:

## ZONAL FLUX DIAGRAM

ZONAL FLUX DIAGRAM:

$\gamma$	C0	C45	C90	C135	C180	C225	C270	C315	$\gamma$	$\Phi$ zone	$\Phi$ total	%lum,lamp
10	932.8	934.2	927.9	924.8	896.6	893.6	908.3	906.7	0- 10	90.65	90.65	11,11
20	736.8	750.2	720.4	717.7	659.0	646.4	668.9	680.9	10- 20	229.6	320.2	38.8,38.8
30	406.0	417.4	390.9	372.9	331.1	318.5	334.2	341.3	20- 30	239.9	560.1	68,68
40	159.7	162.6	154.3	146.6	123.1	119.2	126.7	127.0	30- 40	148.0	708.2	85.9,85.9
50	57.47	57.16	54.36	51.19	40.38	39.90	45.39	45.17	40- 50	66.25	774.4	93.9,93.9
60	22.06	21.97	20.54	19.34	17.06	17.35	18.95	19.41	50- 60	26.58	801.0	97.2,97.2
70	12.79	12.86	9.997	11.30	9.410	9.676	9.055	10.96	60- 70	14.93	815.9	99,99
80	5.144	3.603	0.9576	1.415	2.523	1.932	0.8456	1.947	70- 80	6.744	822.7	99.8,99.8
90	0.0040	0.0034	0	0.0009	0.0051	0.0069	0.0081	0.0031	80- 90	0.6446	823.3	99.9,99.9
100	0.0017	0	0	0	0.0144	0.0136	0.0102	0.0081	90-100	0.0047	823.3	99.9,99.9
110	0.0063	0.0123	0.0051	0.0099	0.0233	0.0234	0.0183	0.0227	100-110	0.0115	823.3	99.9,99.9
120	0.0299	0.0323	0.0270	0.0317	0.0504	0.0540	0.0430	0.0459	110-120	0.0242	823.4	99.9,99.9
130	0.0994	0.0963	0.0947	0.1022	0.1560	0.1530	0.1341	0.1484	120-130	0.0656	823.4	99.9,99.9
140	0.2275	0.2069	0.2053	0.2238	0.4013	0.3825	0.3269	0.3783	130-140	0.1543	823.6	99.9,99.9
150	0.3346	0.2944	0.2783	0.3314	0.6741	0.6505	0.5535	0.6165	140-150	0.2399	823.8	99.9,99.9
160	0.4461	0.4150	0.4084	0.4572	0.8439	0.8450	0.7535	0.7725	150-160	0.2538	824.1	100,100
170	0.5131	0.4605	0.4784	0.5220	0.8010	0.7866	0.7387	0.7597	160-170	0.1781	824.3	100,100
180	0.6589	0.6162	0.6736	0.6867	0.6641	0.6251	0.6332	0.6727	170-180	0.0605	824.3	100,100
DEG	LUMINOUS INTENSITY:cd									UNIT:lm		

Conical surface Flux(90deg): 748.54 lm

%lum = 90.8%

%lamp = 90.8%

Conical surface Flux(120deg): 801.01 lm

%lum = 97.2%

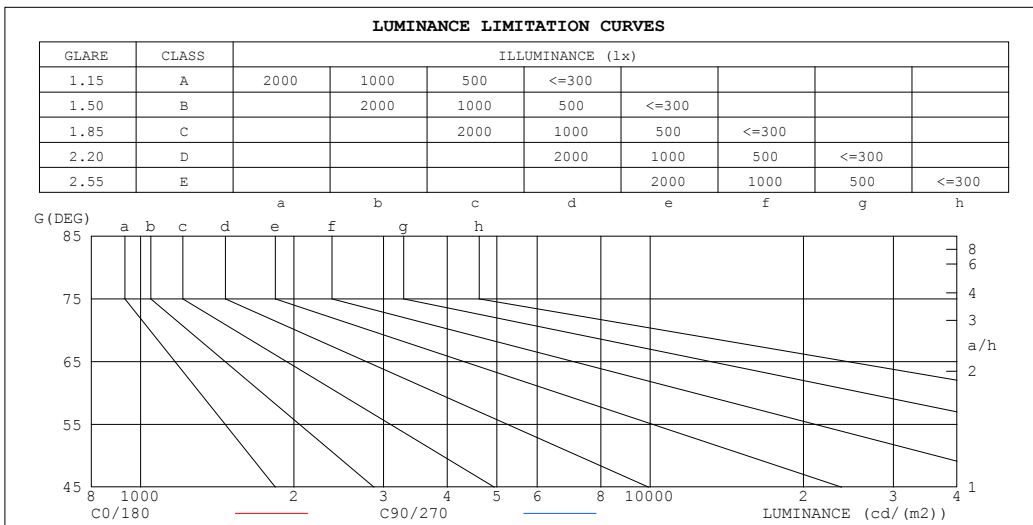
%lamp = 97.2%

C Range: 0 - 360DEG  
C Interval: 22.5DEG  
Test Speed: HIGH  
Temperature:25.2℃  
Operators:Dano  
Test Date:2023-08-31

$\gamma$  Range: 0 - 180DEG  
 $\gamma$  Interval: 1.0DEG  
Test System:EVERFINE GO-R5000\_V2 SYSTEM V2.00.459  
Humidity:55.3%  
Test Distance:2.900m [K=0.8810]  
Remarks:

**LUMINANCE LIMITATION CURVES**

Test:U:24.00V I:0.3730A P:8.952W PF:1.0000 Freq:0Hz Lamp Flux:824.325x1 lm		
NAME:	TYPE:	WEIGHT:
SPEC.:	DIM.:	SERIAL No.:
MFR.:	SUR.:	Shielding Angle:



LUMINANCE cd/(m2)		
G (DEG)	C0/180	C90/270
85	25	11
80	99	18
75	120	67
70	126	97
65	135	118
60	148	137
55	191	170
50	300	282
45	456	434

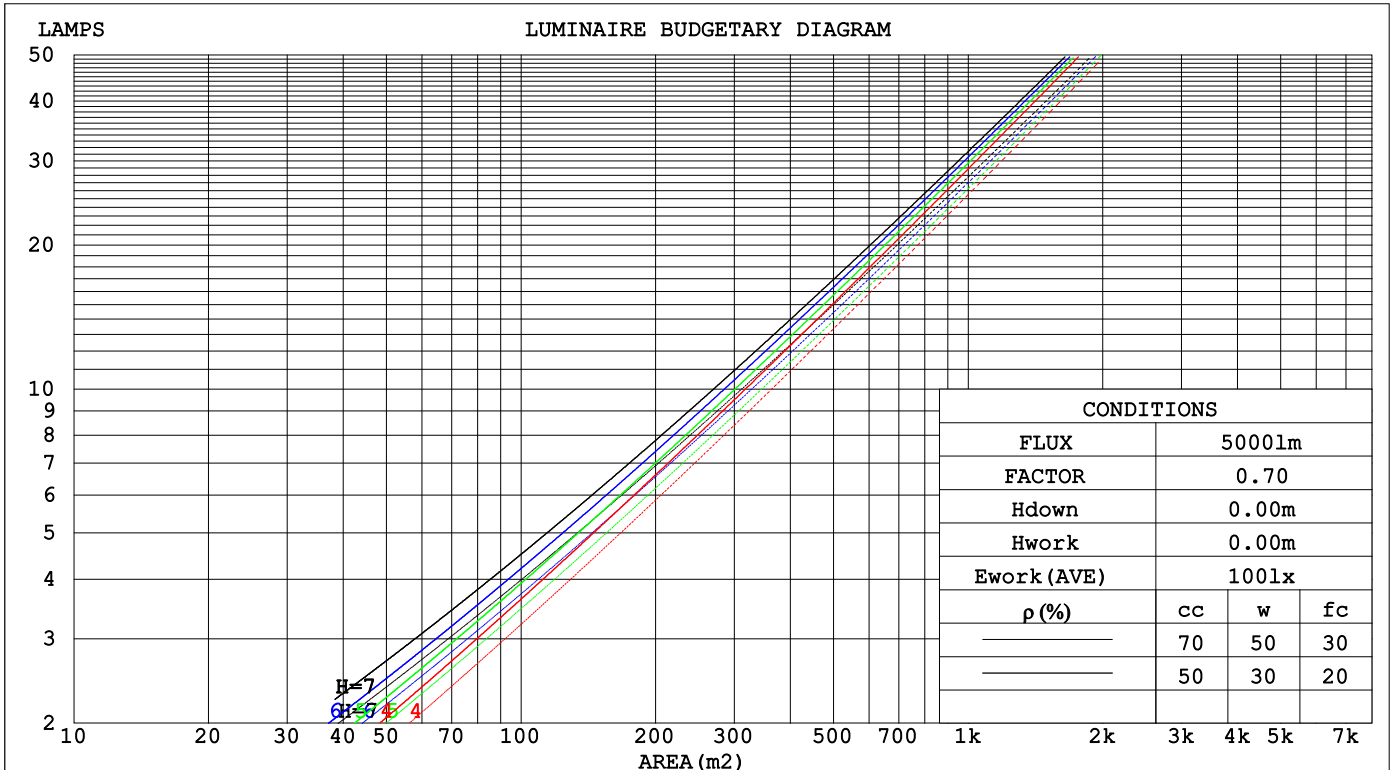
C Range: 0 - 360DEG  
 C Interval: 22.5DEG  
 Test Speed: HIGH  
 Temperature:25.2℃  
 Operators:Dano  
 Test Date:2023-08-31

γ Range: 0 - 180DEG  
 γ Interval: 1.0DEG  
 Test System:EVERFINE GO-R5000\_V2 SYSTEM V2.00.459  
 Humidity:55.3%  
 Test Distance:2.900m [K=0.8810]  
 Remarks:

**CU AND LUMINAIRE BUDGETARY ESTIMATE DIAGRAM**

Test:U:24.00V I:0.3730A P:8.952W PF:1.0000 Freq:0Hz		
Lamp Flux:824.325x1 lm		
NAME:	TYPE:	WEIGHT:
SPEC.:	DIM.:	SERIAL No.:
MFR.:	SUR.:	Shielding Angle:

pcc	30%			70%			50%			30%			10%			0
pw	50%	30%	10%	50%	30%	10%	50%	30%	10%	50%	30%	10%	50%	30%	10%	0
pfc	20%			20%			20%			20%			20%			0
RCR	RCR:Room Cavity Ratio															
	Coefficients of Utilization(CU)															
0.0	1.06	1.06	1.06	1.16	1.16	1.16	1.11	1.11	1.11	1.06	1.06	1.06	1.02	1.02	1.02	.00
1.0	1.00	.99	.97	1.08	1.06	1.03	1.04	1.02	1.00	1.00	.99	.97	.97	.95	.94	.93
2.0	.94	.91	.89	1.00	.96	.93	.97	.94	.91	.94	.91	.89	.91	.89	.87	.85
3.0	.88	.85	.82	.93	.88	.84	.90	.86	.83	.88	.85	.82	.86	.83	.80	.79
4.0	.83	.79	.75	.87	.81	.77	.85	.80	.76	.83	.79	.75	.81	.77	.75	.73
5.0	.78	.73	.70	.81	.76	.71	.79	.74	.71	.78	.73	.70	.76	.72	.69	.68
6.0	.73	.69	.65	.76	.70	.66	.75	.69	.66	.73	.69	.65	.72	.68	.65	.63
7.0	.69	.64	.61	.72	.66	.62	.70	.65	.61	.69	.64	.61	.68	.64	.61	.59
8.0	.65	.61	.57	.68	.62	.58	.66	.61	.57	.65	.61	.57	.64	.60	.57	.55
9.0	.62	.57	.54	.64	.58	.54	.63	.58	.54	.62	.57	.54	.61	.57	.53	.52
10.0	.59	.54	.51	.60	.55	.51	.60	.54	.51	.59	.54	.51	.58	.54	.50	.49



C Range: 0 - 360DEG  
 C Interval: 22.5DEG  
 Test Speed: HIGH  
 Temperature:25.2°C  
 Operators:Dano  
 Test Date:2023-08-31

γ Range: 0 - 180DEG  
 γ Interval: 1.0DEG  
 Test System:EVERFINE GO-R5000\_V2 SYSTEM V2.00.459  
 Humidity:55.3%  
 Test Distance:2.900m [K=0.8810]  
 Remarks:

WEC AND CCEC

Test:U:24.00V I:0.3730A P:8.952W PF:1.0000 Freq:0Hz		
Lamp Flux:824.325x1 lm		
NAME:	TYPE:	WEIGHT:
SPEC.:	DIM.:	SERIAL No.:
MFR.:	SUR.:	Shielding Angle:

$\rho_{cc}$	30%			70%			50%			30%			10%			0
$\rho_w$	50%	30%	10%	50%	30%	10%	50%	30%	10%	50%	30%	10%	50%	30%	10%	0
$\rho_{fc}$	20%			20%			20%			20%			20%			0
RCR	RCR:Room Cavity Ratio						Wall Exitance Coefficients(WEC)									
0.0																
1.0	.158	.091	.029	.183	.104	.033	.170	.097	.031	.158	.091	.029	.147	.085	.028	
2.0	.155	.087	.027	.176	.097	.030	.165	.092	.029	.155	.087	.027	.146	.083	.026	
3.0	.150	.082	.025	.168	.090	.027	.158	.086	.026	.150	.082	.025	.142	.079	.024	
4.0	.144	.077	.023	.159	.083	.025	.151	.080	.024	.144	.077	.023	.137	.074	.023	
5.0	.138	.073	.022	.151	.078	.023	.144	.075	.022	.138	.073	.022	.132	.070	.021	
6.0	.132	.069	.020	.144	.073	.021	.138	.071	.021	.132	.069	.020	.127	.067	.020	
7.0	.127	.065	.019	.137	.068	.020	.132	.067	.019	.127	.065	.019	.122	.063	.019	
8.0	.122	.062	.018	.131	.065	.018	.126	.063	.018	.122	.062	.018	.117	.060	.018	
9.0	.117	.059	.017	.125	.061	.017	.121	.060	.017	.117	.059	.017	.113	.057	.017	
10.0	.112	.056	.016	.120	.058	.016	.116	.057	.016	.112	.056	.016	.109	.055	.016	

$\rho_{cc}$	30%			70%			50%			30%			10%			0
$\rho_w$	50%	30%	10%	50%	30%	10%	50%	30%	10%	50%	30%	10%	50%	30%	10%	0
$\rho_{fc}$	20%			20%			20%			20%			20%			0
RCR	RCR:Room Cavity Ratio						Ceiling Cavity Exitance Coefficients(CCEC)									
0.0	.064	.064	.064	.164	.164	.164	.112	.112	.112	.064	.064	.064	.021	.021	.021	
1.0	.058	.054	.050	.148	.136	.125	.101	.093	.086	.058	.054	.050	.019	.017	.016	
2.0	.054	.046	.040	.136	.115	.097	.093	.079	.068	.054	.046	.040	.017	.015	.013	
3.0	.050	.040	.032	.126	.099	.077	.086	.069	.054	.050	.040	.032	.016	.013	.010	
4.0	.047	.035	.026	.117	.086	.063	.081	.060	.044	.047	.035	.026	.015	.011	.009	
5.0	.044	.031	.022	.110	.077	.052	.076	.054	.036	.044	.031	.022	.014	.010	.007	
6.0	.042	.028	.018	.104	.069	.043	.072	.048	.031	.042	.028	.018	.013	.009	.006	
7.0	.039	.026	.015	.098	.062	.037	.068	.044	.026	.039	.026	.015	.013	.008	.005	
8.0	.038	.024	.013	.093	.057	.032	.065	.040	.022	.038	.024	.013	.012	.008	.004	
9.0	.036	.022	.012	.089	.053	.028	.062	.037	.020	.036	.022	.012	.012	.007	.004	
10.0	.034	.020	.010	.085	.049	.024	.059	.034	.017	.034	.020	.010	.011	.007	.003	

C Range: 0 - 360DEG  
 C Interval: 22.5DEG  
 Test Speed: HIGH  
 Temperature:25.2℃  
 Operators:Dano  
 Test Date:2023-08-31

$\gamma$  Range: 0 - 180DEG  
 $\gamma$  Interval: 1.0DEG  
 Test System:EVERFINE GO-R5000\_V2 SYSTEM V2.00.459  
 Humidity:55.3%  
 Test Distance:2.900m [K=0.8810]  
 Remarks:

UGR(Unified Glare Rating) Table

Test:U:24.00V I:0.3730A P:8.952W PF:1.0000 Freq:0Hz										
Lamp Flux:824.325x1 lm										
NAME:			TYPE:			WEIGHT:				
SPEC.:			DIM.:			SERIAL No.:				
MFR.:			SUR.:			Shielding Angle:				
ceiling/cavity	0.7	0.7	0.5	0.5	0.3	0.7	0.7	0.5	0.5	0.3
walls	0.5	0.3	0.5	0.3	0.3	0.5	0.3	0.5	0.3	0.3
working plane	0.2	0.2	0.2	0.2	0.2	0.2	0.2	0.2	0.2	0.2
Room dimensions	Viewed crosswise					Viewed endwise				
x = 2H y = 2H	5.8	6.8	6.0	7.0	7.2	5.6	6.6	5.8	6.7	6.9
3H	6.0	7.0	6.3	7.2	7.4	5.7	6.6	6.0	6.8	7.0
4H	6.2	7.0	6.4	7.3	7.5	5.7	6.6	6.0	6.8	7.0
6H	6.3	7.1	6.6	7.3	7.6	5.7	6.5	6.0	6.7	7.0
8H	6.3	7.0	6.6	7.3	7.6	5.6	6.4	5.9	6.7	6.9
12H	6.2	7.0	6.5	7.2	7.5	5.6	6.3	5.9	6.6	6.9
4H 2H	5.8	6.6	6.0	6.9	7.1	5.5	6.4	5.8	6.6	6.9
3H	6.1	6.9	6.5	7.2	7.4	5.8	6.6	6.1	6.8	7.1
4H	6.4	7.0	6.7	7.3	7.7	5.8	6.5	6.2	6.8	7.1
6H	6.6	7.2	6.9	7.5	7.8	5.8	6.4	6.2	6.7	7.1
8H	6.6	7.1	7.0	7.5	7.8	5.8	6.3	6.2	6.7	7.0
12H	6.5	7.0	6.9	7.4	7.8	5.7	6.2	6.1	6.6	7.0
8H 4H	6.3	6.9	6.7	7.3	7.6	5.9	6.4	6.3	6.8	7.1
6H	6.6	7.1	7.0	7.5	7.9	5.8	6.3	6.3	6.7	7.1
8H	6.6	7.0	7.1	7.5	7.9	5.8	6.2	6.2	6.6	7.0
12H	6.6	6.9	7.1	7.4	7.9	5.7	6.1	6.2	6.5	7.0
12H 4H	6.3	6.8	6.7	7.2	7.6	5.8	6.3	6.2	6.7	7.1
6H	6.6	7.0	7.0	7.4	7.8	5.8	6.2	6.3	6.6	7.1
8H	6.6	6.9	7.1	7.4	7.9	5.8	6.1	6.2	6.5	7.0
Variations with the observer position at spacings(CIE Pub.117):										
S = 1.0H	+ 1.5 / - 2.2					+ 1.7 / - 3.1				
1.5H	+ 2.5 / - 2.1					+ 2.7 / - 2.7				
2.0H	+ 2.7 / - 1.6					+ 3.2 / - 2.0				

CIE Pub.117, 824.3 lm Total Lamp Luminous Flux Corrected (8log(F/F0) = -0.7)  
 Area: 0.3 m2

C Range: 0 - 360DEG  
 C Interval: 22.5DEG  
 Test Speed: HIGH  
 Temperature:25.2℃  
 Operators:Dano  
 Test Date:2023-08-31

γ Range: 0 - 180DEG  
 γ Interval: 1.0DEG  
 Test System:EVERFINE GO-R5000\_V2 SYSTEM V2.00.459  
 Humidity:55.3%  
 Test Distance:2.900m [K=0.8810]  
 Remarks:

**UTILIZATION FACTORS TABLE**

Test:U:24.00V I:0.3730A P:8.952W PF:1.0000 Freq:0Hz Lamp Flux:824.325x1 lm		
NAME:	TYPE:	WEIGHT:
SPEC.:	DIM.:	SERIAL No.:
MFR.:	SUR.:	Shielding Angle:

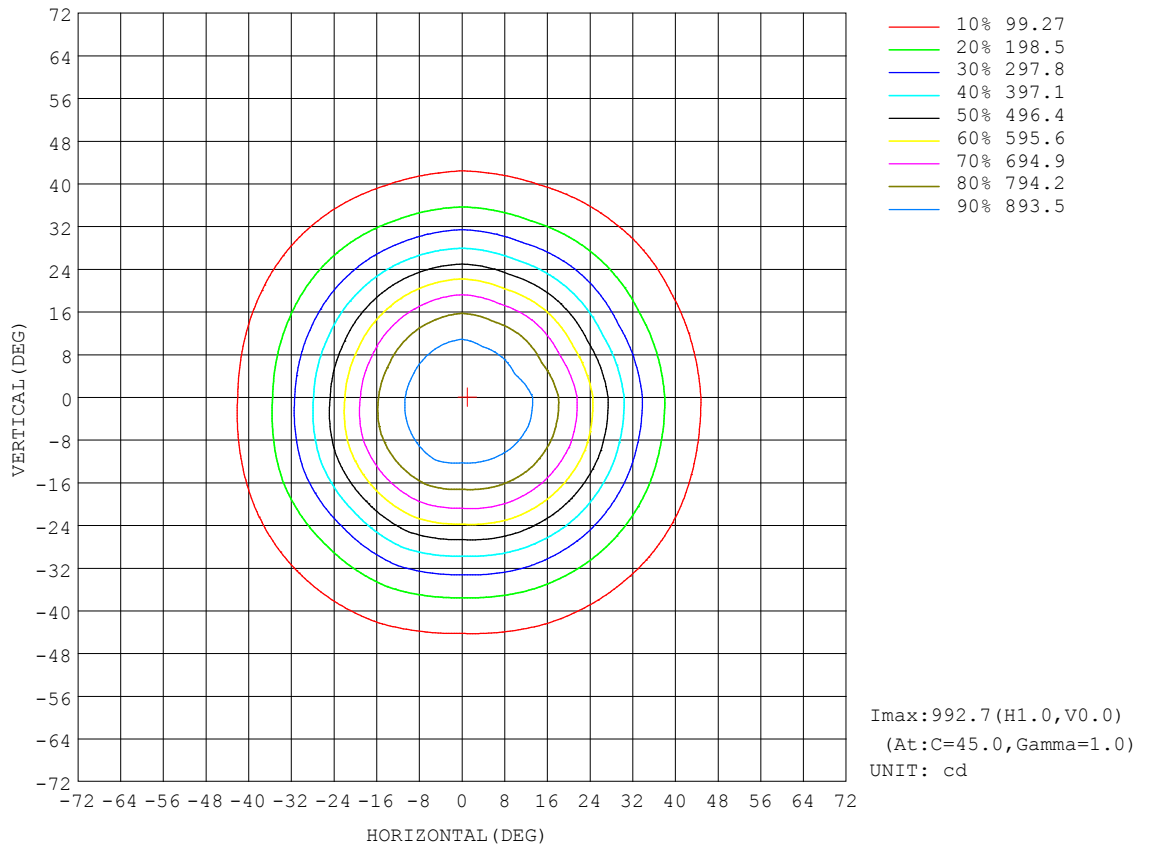
REFLECTANCE										
Ceiling	0.8	0.8	0.8	0.7	0.7	0.7	0.5	0.5	0.5	0
Walls	0.7	0.5	0.3	0.7	0.5	0.3	0.7	0.5	0.3	0
Working plane	0.2	0.2	0.2	0.2	0.2	0.2	0.2	0.2	0.2	0
ROOM INDEX	UTILIZATION FACTORS (PERCENT) $k(RI) \times RCR = 5$									
k = 0.60	83	76	71	82	75	71	81	75	71	67
0.80	91	84	80	90	84	80	89	83	79	75
1.00	96	90	85	95	89	85	93	89	85	80
1.25	100	95	91	99	94	90	97	93	89	85
1.50	104	98	94	102	97	94	100	96	93	88
2.00	107	102	99	105	101	98	103	99	96	91
2.50	109	105	101	107	103	100	104	101	98	92
3.00	111	107	104	109	105	103	105	103	100	94
4.00	113	110	107	111	108	106	107	105	103	96
5.00	114	112	110	112	110	108	108	106	105	97
ROOM INDEX	UF(total)									Direct
According to DIN EN 13032-2 2004			Suspended				SHRNOM = 1.25			

C Range: 0 - 360DEG  
 C Interval: 22.5DEG  
 Test Speed: HIGH  
 Temperature:25.2°C  
 Operators:Dano  
 Test Date:2023-08-31

$\gamma$  Range: 0 - 180DEG  
 $\gamma$  Interval: 1.0DEG  
 Test System:EVERFINE GO-R5000\_V2 SYSTEM V2.00.459  
 Humidity:55.3%  
 Test Distance:2.900m [K=0.8810]  
 Remarks:

ISOCANDELA DIAGRAM

Test:U:24.00V I:0.3730A P:8.952W PF:1.0000 Freq:0Hz		
Lamp Flux:824.325x1 lm		
NAME:	TYPE:	WEIGHT:
SPEC.:	DIM.:	SERIAL No.:
MFR.:	SUR.:	Shielding Angle:

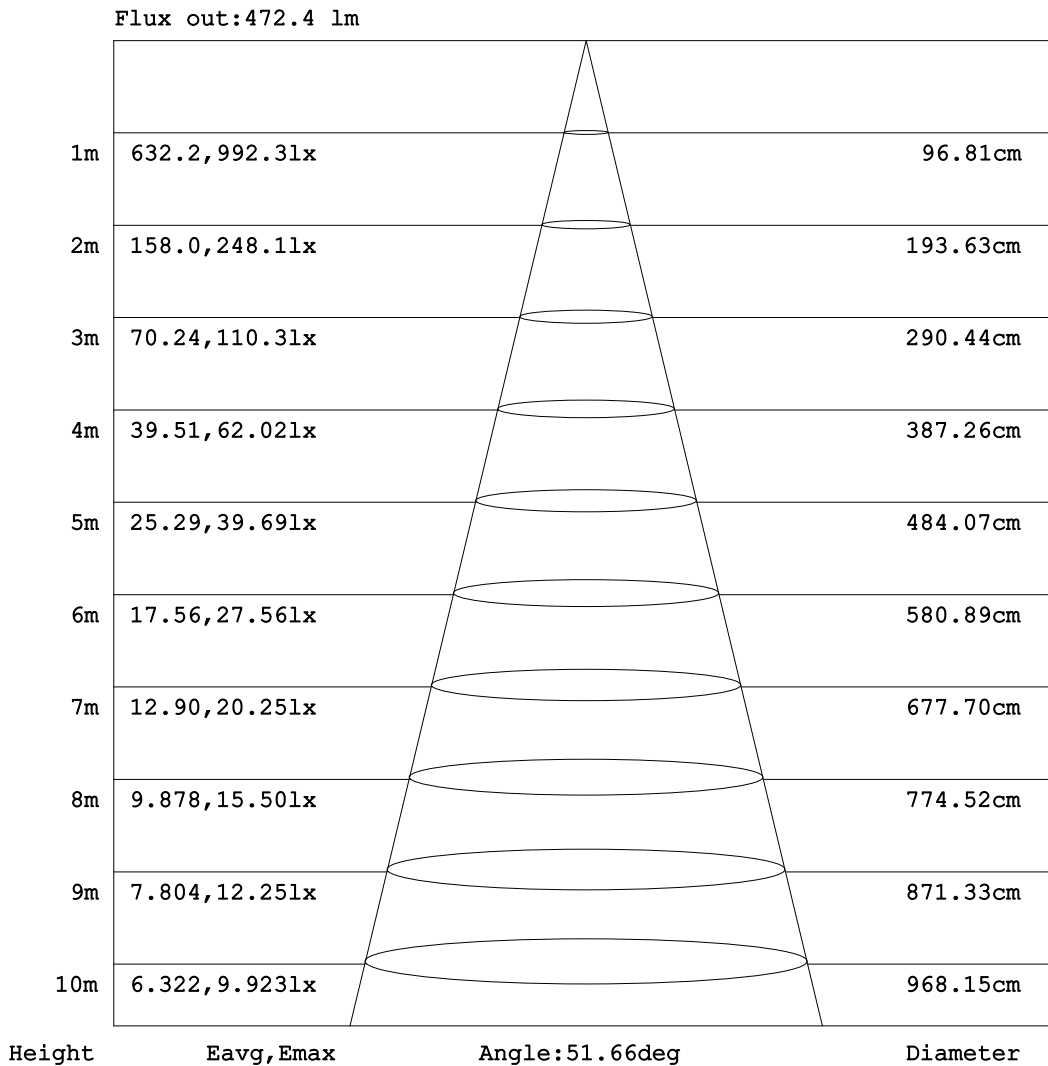


C Range: 0 - 360DEG  
 C Interval: 22.5DEG  
 Test Speed: HIGH  
 Temperature:25.2℃  
 Operators:Dano  
 Test Date:2023-08-31

γ Range: 0 - 180DEG  
 γ Interval: 1.0DEG  
 Test System:EVERFINE GO-R5000\_V2 SYSTEM V2.00.459  
 Humidity:55.3%  
 Test Distance:2.900m [K=0.8810]  
 Remarks:

**AAI Figure**

Test:U:24.00V I:0.3730A P:8.952W PF:1.0000 Freq:0Hz		
Lamp Flux:824.325x1 lm		
NAME:	TYPE:	WEIGHT:
SPEC.:	DIM.:	SERIAL No.:
MFR.:	SUR.:	Shielding Angle:



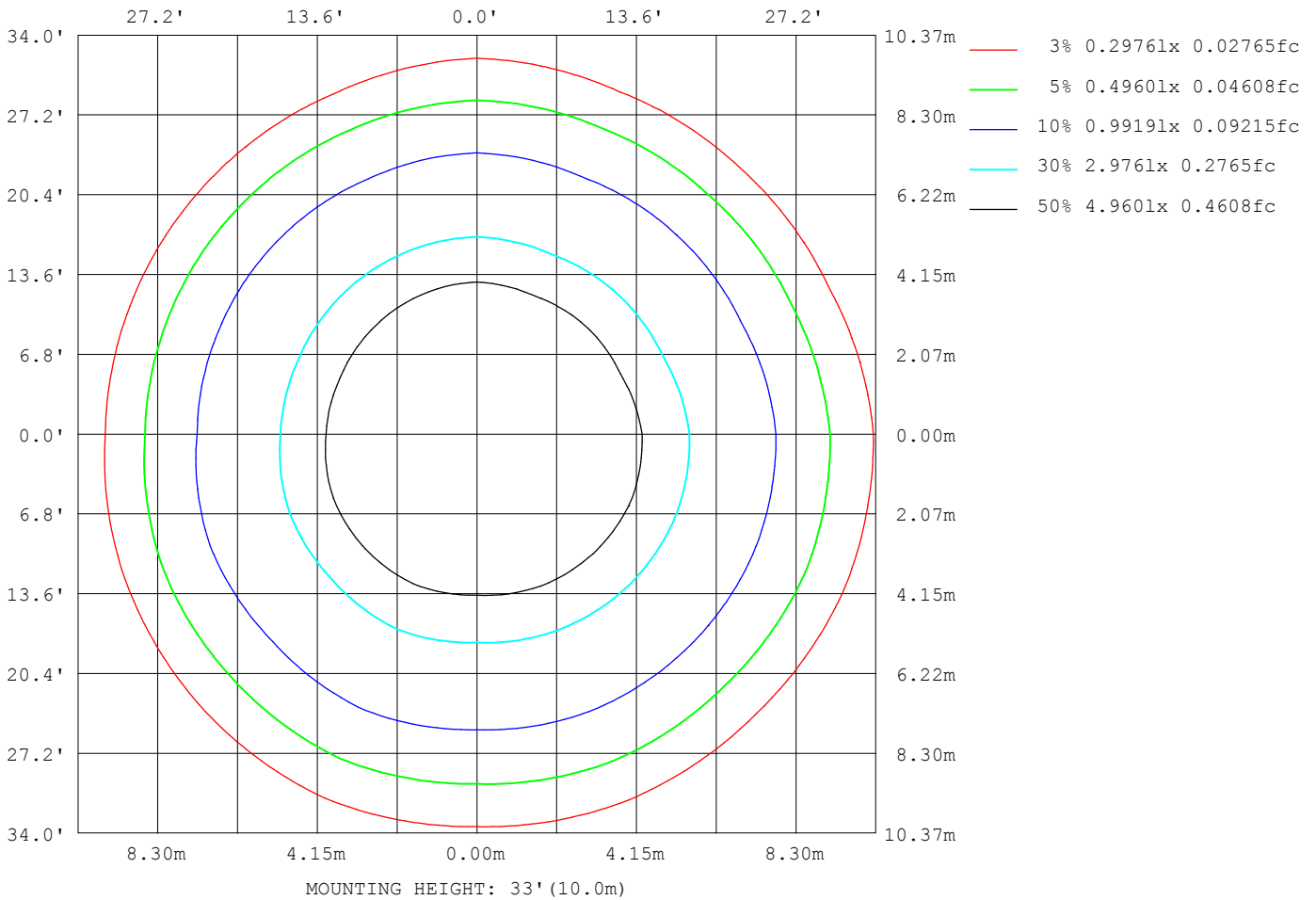
Note:The Curves indicate the illuminated area and the average illumination when the luminaire is at different distance.

C Range: 0 - 360DEG  
 C Interval: 22.5DEG  
 Test Speed: HIGH  
 Temperature:25.2°C  
 Operators:Dano  
 Test Date:2023-08-31

γ Range: 0 - 180DEG  
 γ Interval: 1.0DEG  
 Test System:EVERFINE GO-R5000\_V2 SYSTEM V2.00.459  
 Humidity:55.3%  
 Test Distance:2.900m [K=0.8810]  
 Remarks:

ISOLUX DIAGRAM

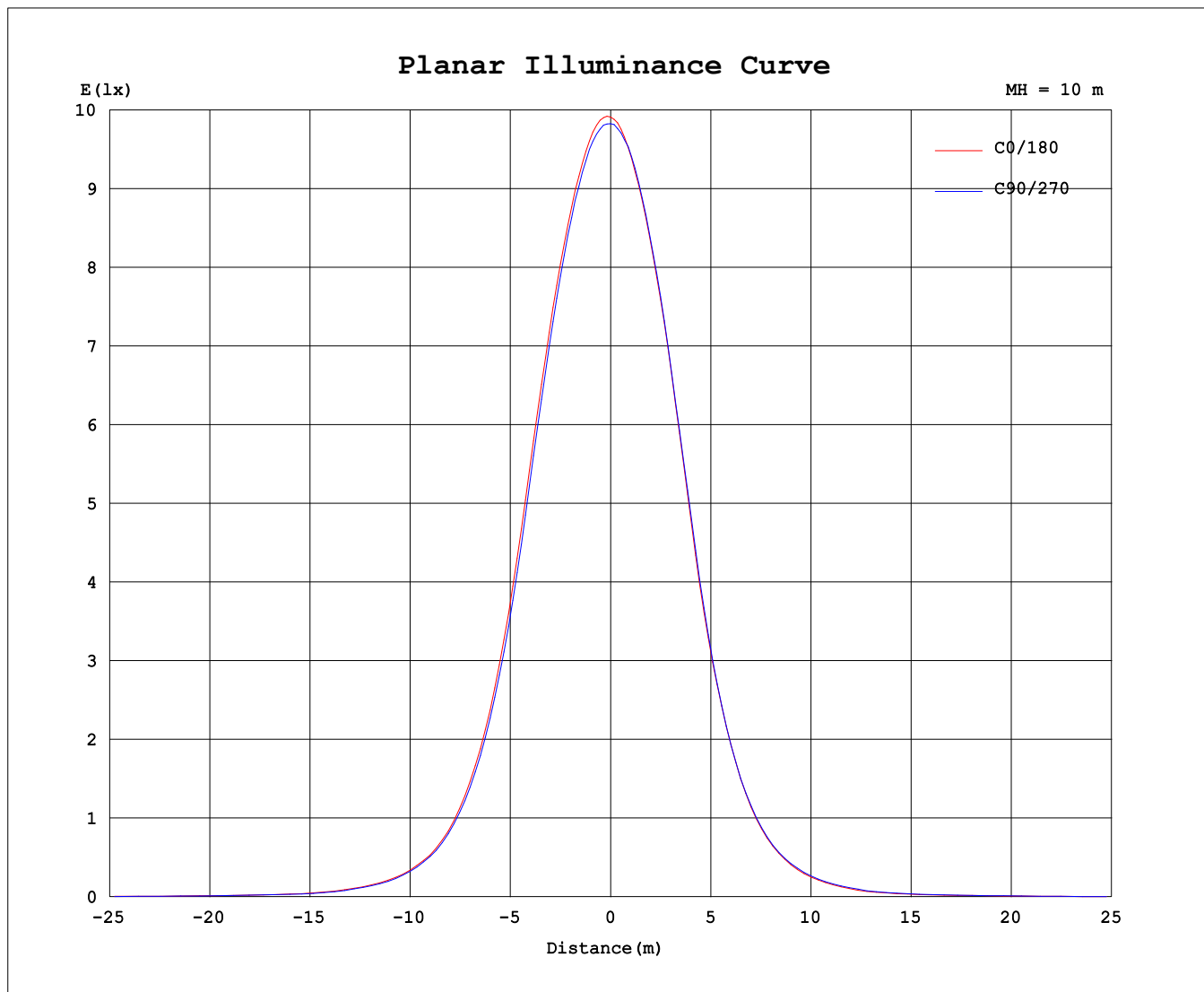
Test:U:24.00V I:0.3730A P:8.952W PF:1.0000 Freq:0Hz Lamp Flux:824.325x1 lm		
NAME:	TYPE:	WEIGHT:
SPEC.:	DIM.:	SERIAL No.:
MFR.:	SUR.:	Shielding Angle:



C Range: 0 - 360DEG  
 C Interval: 22.5DEG  
 Test Speed: HIGH  
 Temperature:25.2°C  
 Operators:Dano  
 Test Date:2023-08-31

γ Range: 0 - 180DEG  
 γ Interval: 1.0DEG  
 Test System:EVERFINE GO-R5000\_V2 SYSTEM V2.00.459  
 Humidity:55.3%  
 Test Distance:2.900m [K=0.8810]  
 Remarks:

### Planar Illuminance Curve



C Range: 0 - 360DEG  
C Interval: 22.5DEG  
Test Speed: HIGH  
Temperature: 25.2°C  
Operators: Dano  
Test Date: 2023-08-31

γ Range: 0 - 180DEG  
γ Interval: 1.0DEG  
Test System: EVERFINE GO-R5000\_V2 SYSTEM V2.00.459  
Humidity: 55.3%  
Test Distance: 2.900m [K=0.8810]  
Remarks:

LUMINOUS DISTRIBUTION INTENSITY DATA

Test:U:24.00V I:0.3730A P:8.952W PF:1.0000 Freq:0Hz		
Lamp Flux:824.325x1 lm		
NAME:	TYPE:	WEIGHT:
SPEC.:	DIM.:	SERIAL No.:
MFR.:	SUR.:	Shielding Angle:

Table--1

UNIT: cd

C (DEG) γ (DEG)	0	22.5	45	67.5	90	112.5	135	157.5	180	202.5	225	247.5	270	292.5	315	337.5			
0	984	984	984	984	984	984	984	984	984	984	984	984	984	984	984	984			
5	976	978	978	975	973	974	971	966	956	954	957	960	966	960	962	966			
10	933	937	934	929	928	934	925	917	897	890	894	899	908	899	907	910			
15	856	864	863	852	845	857	847	836	804	790	793	800	813	804	819	827			
20	737	752	750	737	720	732	718	703	659	642	646	655	669	658	681	696			
25	574	592	587	576	554	567	545	528	483	470	474	483	495	483	506	523			
30	406	418	417	407	391	402	373	367	331	319	318	322	334	322	341	357			
35	265	271	272	267	255	263	240	237	207	202	202	201	212	202	216	229			
40	160	165	163	162	154	160	147	142	123	120	119	120	127	122	127	139			
45	95.9	98.8	94.9	96.3	92.2	94.7	88.0	80.3	70.9	69.6	69.5	69.7	75.7	71.7	75.1	81.4			
50	57.5	58.8	57.2	56.1	54.4	55.5	51.2	45.2	40.4	38.8	39.9	40.6	45.4	42.4	45.2	48.4			
55	32.7	34.0	32.3	31.5	29.3	29.8	26.9	25.0	22.7	22.6	23.0	24.0	25.9	25.5	26.5	28.8			
60	22.1	22.8	22.0	21.9	20.5	20.8	19.3	18.5	17.1	17.1	17.4	18.1	18.9	19.0	19.4	20.5			
65	17.0	17.6	17.0	16.7	15.0	15.9	15.1	14.3	13.1	13.0	13.1	13.6	13.9	14.2	14.9	15.9			
70	12.8	13.3	12.9	11.2	10.00	11.2	11.3	9.65	9.41	9.62	9.68	9.31	9.05	9.63	11.0	11.7			
75	9.27	9.70	8.52	5.95	5.23	6.14	5.44	4.19	5.50	6.72	5.79	4.82	4.70	4.61	6.48	8.28			
80	5.14	5.53	3.60	1.86	0.96	1.94	1.41	0.45	2.52	3.27	1.93	0.99	0.85	0.79	1.95	3.75			
85	0.65	0.73	0.26	0.29	0.29	0.31	0.18	0.09	0.19	0.32	0.31	0.36	0.41	0.34	0.28	0.19			
90	0.00	0.00	0.00	0.00	0.00	0.01	0.00	0.00	0.01	0.01	0.01	0.00	0.01	0.00	0.00	0.00			
95	0.00	0.00	0.00	0.00	0.00	0.00	0.00	0.00	0.01	0.01	0.01	0.01	0.01	0.01	0.01	0.01			
100	0.00	0.01	0.00	0.00	0.00	0.00	0.00	0.01	0.01	0.01	0.01	0.01	0.01	0.01	0.01	0.01			
105	0.00	0.01	0.01	0.00	0.00	0.00	0.01	0.01	0.02	0.02	0.02	0.01	0.01	0.01	0.01	0.02			
110	0.01	0.01	0.01	0.01	0.01	0.01	0.01	0.01	0.02	0.03	0.02	0.02	0.02	0.02	0.02	0.02			
115	0.02	0.02	0.02	0.01	0.01	0.01	0.02	0.02	0.03	0.03	0.04	0.03	0.03	0.03	0.03	0.03			
120	0.03	0.03	0.03	0.03	0.03	0.03	0.03	0.03	0.05	0.05	0.05	0.05	0.04	0.05	0.05	0.05			
125	0.06	0.06	0.06	0.05	0.05	0.05	0.06	0.06	0.09	0.09	0.09	0.08	0.08	0.08	0.08	0.08			
130	0.10	0.10	0.10	0.09	0.09	0.09	0.10	0.11	0.16	0.16	0.15	0.14	0.13	0.14	0.15	0.15			
135	0.16	0.15	0.14	0.14	0.15	0.15	0.16	0.17	0.26	0.26	0.26	0.23	0.22	0.23	0.25	0.25			
140	0.23	0.22	0.21	0.19	0.21	0.20	0.22	0.23	0.40	0.40	0.38	0.34	0.33	0.35	0.38	0.39			
145	0.29	0.28	0.26	0.23	0.24	0.26	0.29	0.31	0.55	0.54	0.53	0.47	0.44	0.47	0.51	0.53			
150	0.33	0.32	0.29	0.27	0.28	0.31	0.33	0.35	0.67	0.68	0.65	0.60	0.55	0.58	0.62	0.66			
155	0.40	0.39	0.36	0.35	0.34	0.38	0.40	0.42	0.79	0.79	0.77	0.74	0.67	0.67	0.72	0.75			
160	0.45	0.43	0.42	0.39	0.41	0.43	0.46	0.47	0.84	0.84	0.85	0.80	0.75	0.75	0.77	0.81			
165	0.48	0.47	0.45	0.42	0.44	0.47	0.49	0.49	0.84	0.85	0.83	0.79	0.76	0.75	0.77	0.80			
170	0.51	0.49	0.46	0.46	0.48	0.51	0.52	0.52	0.80	0.80	0.79	0.75	0.74	0.74	0.76	0.78			
175	0.56	0.55	0.53	0.54	0.56	0.56	0.57	0.57	0.72	0.72	0.73	0.71	0.72	0.71	0.73	0.74			
180	0.66	0.63	0.62	0.64	0.67	0.68	0.69	0.66	0.66	0.66	0.63	0.62	0.63	0.65	0.67	0.68			

C Range: 0 - 360DEG  
 C Interval: 22.5DEG  
 Test Speed: HIGH  
 Temperature:25.2℃  
 Operators:Dano  
 Test Date:2023-08-31

γ Range: 0 - 180DEG  
 γ Interval: 1.0DEG  
 Test System:EVERFINE GO-R5000\_V2 SYSTEM V2.00.459  
 Humidity:55.3%  
 Test Distance:2.900m [K=0.8810]  
 Remarks: